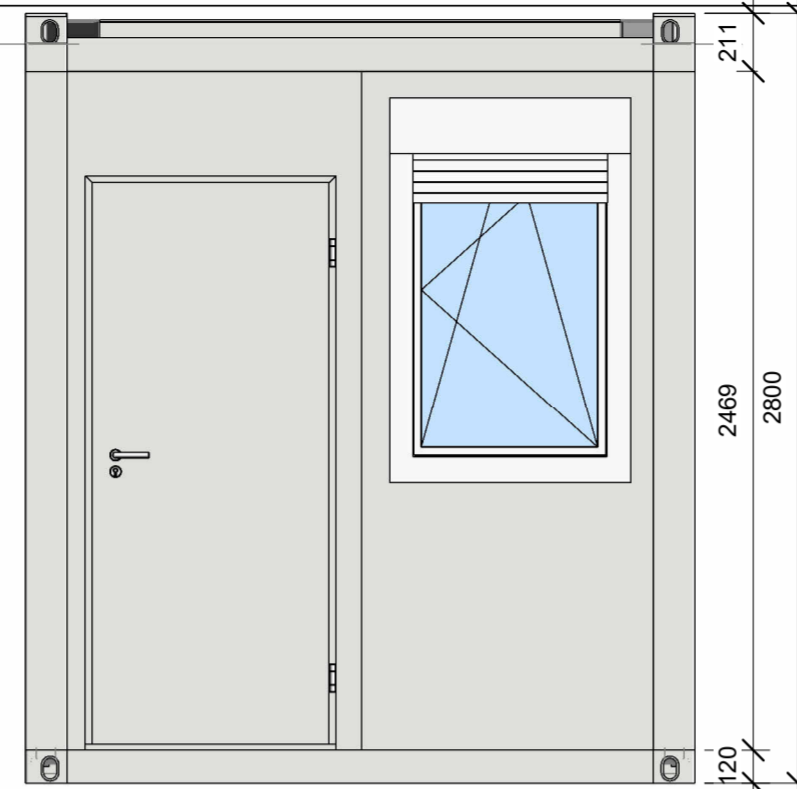
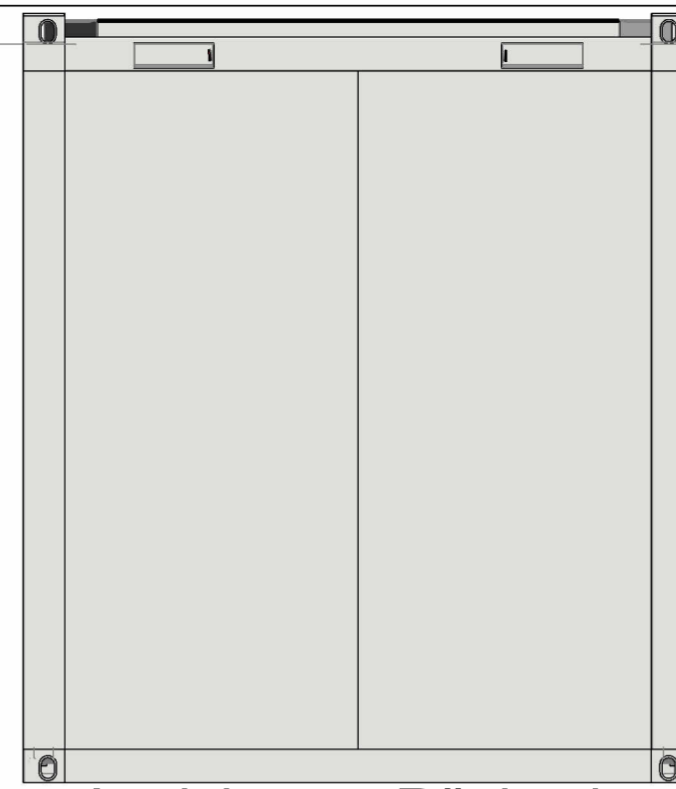


6 {3D}



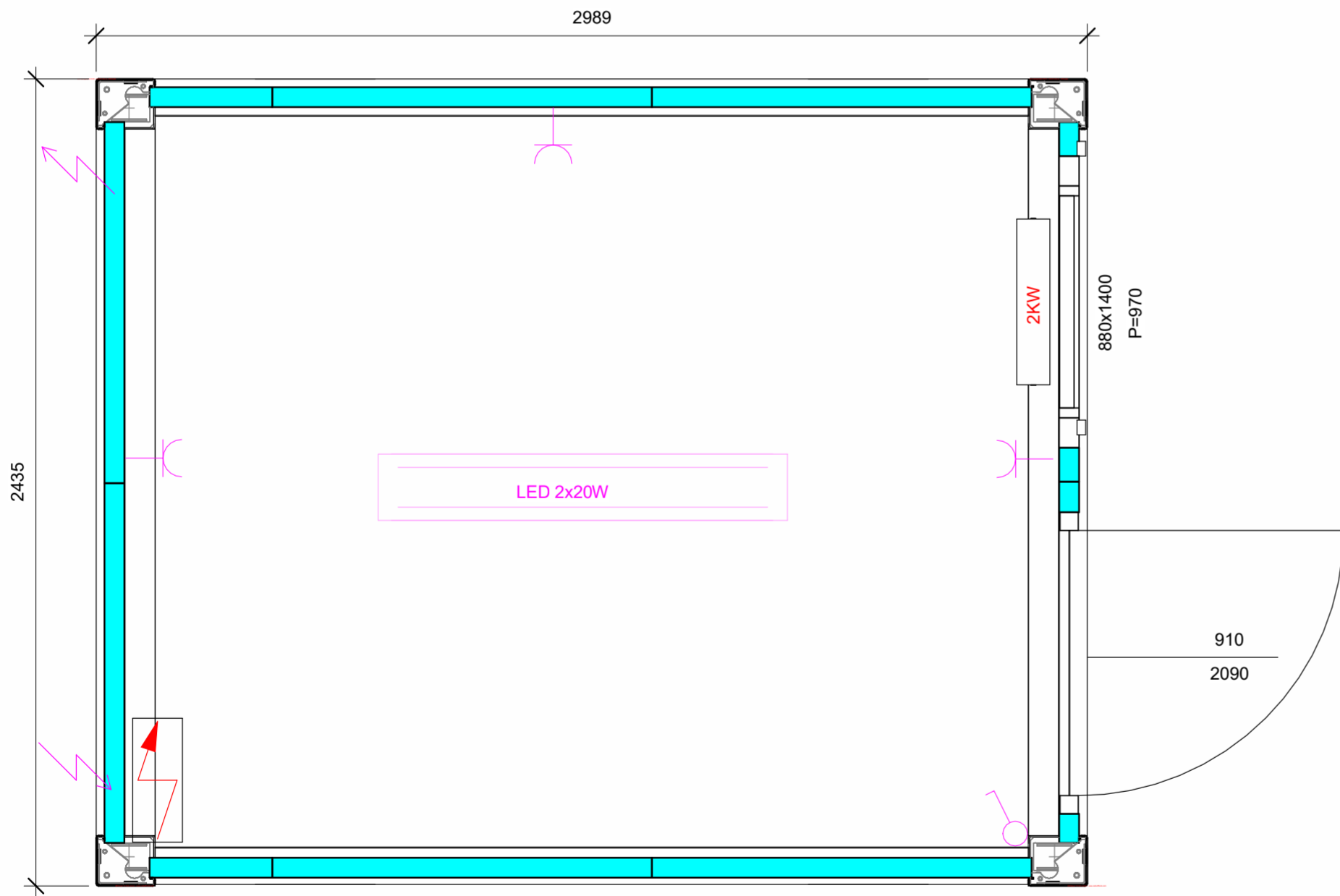
2 Ansicht von Vorne
1 : 25



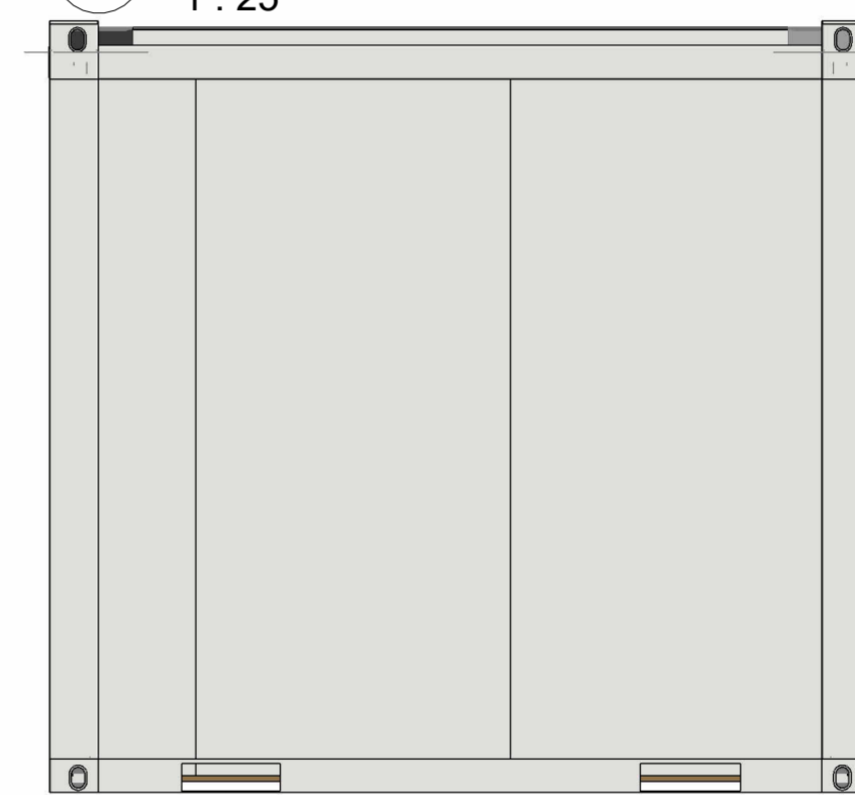
4 Ansicht von Rückseite
1 : 25

- Rauminnenhöhe: 2520mm
- Lackierung: RAL 9002
- Innendekor: Stahlblech RAL 9010
- Elektrik VDE 400V/32A/5-polig
- Bodendämmung: 60mm EPS
- Dachdämmung: 80mm EPS+30mm PU-Schaum
- Zementgebundene Bodenspanplatte 22mm
- PVC Bodenbelag

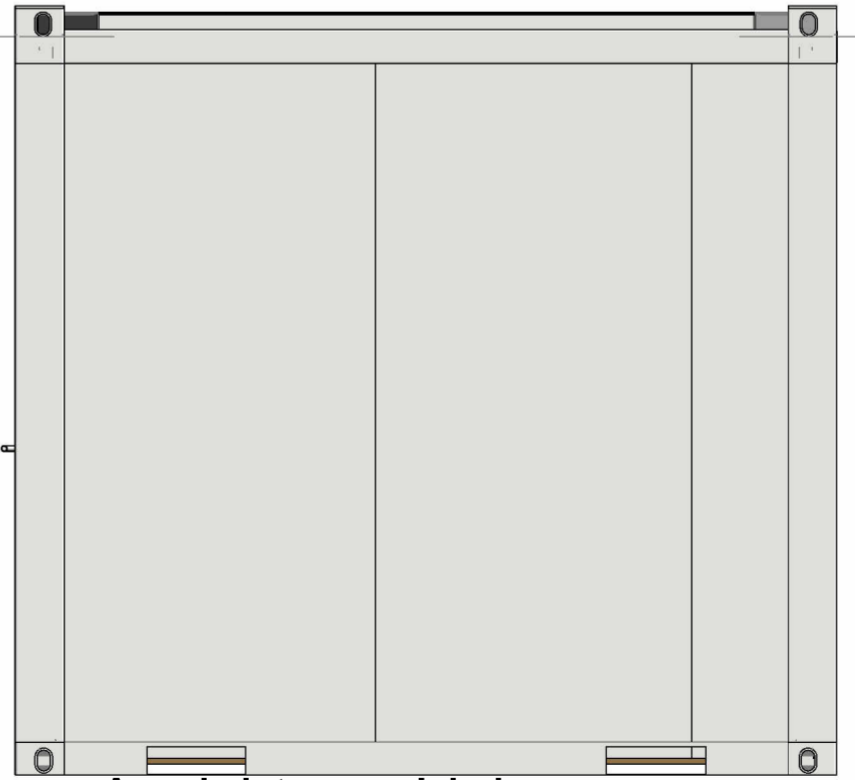
Panel Typ	Isolierung	Länge [m]	Stk.
PU [9002-9010]	60mm	9.90	10



1 Grundriss
1 : 15



3 Ansicht von Rechts
1 : 25



5 Ansicht von Links
1 : 25



Bürocontainer 10'

Project number	000 001
Date	13.04.2022
Drawn by	Barisic Bojana
Checked by	Amir Alic
A102	
Scale	As indicated

TÜREN

Titel	Licht Abm.	Abm.	Material	Farbe	Glas (B)	Glas (H)	Stk.
Metalltür	800x2000	910x2090	Metall	RAL 9002			1

FENSTER


Titel	Abm.	Material	Farbe	Stk.
Fenster, mit Rolladen	880x1400	PVC	RAL 9010	1

FIX

Titel	Abm.	Material	Farbe	Stk.

ELEKTRISCHE AUSRÜSTUNG

Elektrogerät	Stk.
 Sicherungskasten	1
 Schalter IP20	1
 Einzelsteckdose IP20	3
 Licht LED 2x20W	1

	
<h3>Bürocontainer 10'</h3>	
Project number	000 001
Date	13.04.2022
Drawn by	Barisic Bojan
Checked by	Alic Amir
<h2>A103</h2>	
Scale	